

# Croft Passage of the Palmetto Trail

420000m.E

21

22

23

24

25

426000m.E

3863000m.N

62

61

3860

59

58

3857000m.N

3863000m.N

62

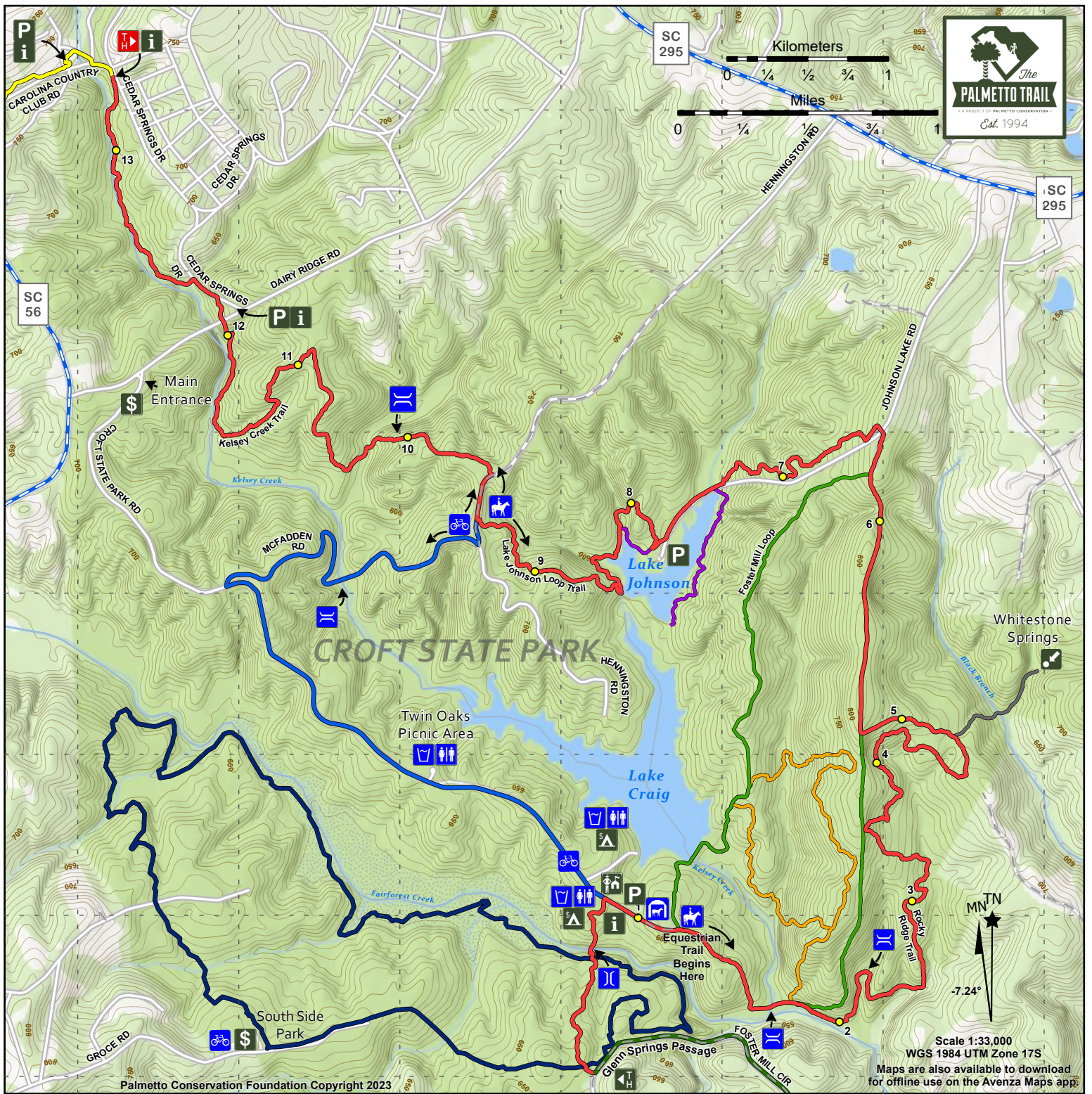
61

3860

59

58

3857000m.N



Scale 1:33,000  
WGS 1984 UTM Zone 17S  
Maps are also available to download for offline use on the Avenza Maps app.

420000m.E

21

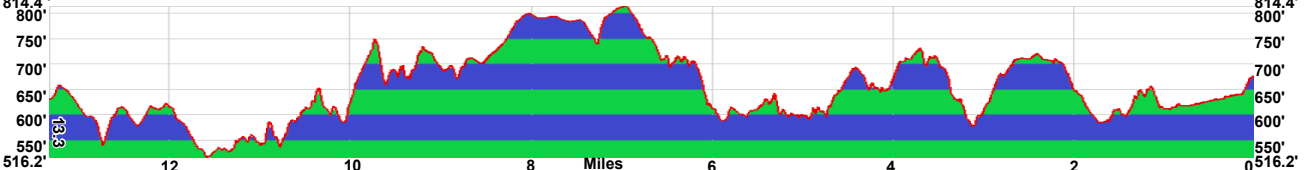
22

23

24

25

426000m.E



- |                                   |                     |                          |                    |               |               |
|-----------------------------------|---------------------|--------------------------|--------------------|---------------|---------------|
| Croft Passage - 13.3 Miles        | Foster Mill Loop    | Whitestone Springs Trail | Whitestone Springs | Admission Fee | Water         |
| Bike Route - 3.7 Miles            | Beech Tree Trail    | Stables                  | Parking            | Bikes         | Unpaved Roads |
| Glenn Springs Passage - 2.3 Miles | Edwin Johnson Trail | Equestrians              | Kiosk              | Bridge        | SC Highways   |
| Cedar Springs Passage - 2.9 Miles | South Side Loop     | Park Office              | Fee Camping        | Restroom      | Mile Markers  |